

USING TENGRAPH IF YOU ARE NEW TO THE SYSTEM.

Here is an option of how to get onto Tengraph:

Google: Department of Mines Tengraph

Click on: Online Software Requirements for Running Tengraph

Download Client Version that suits your computer. For most people it will be the version for people with Windows 7, XP, VISTA, 3003 2008

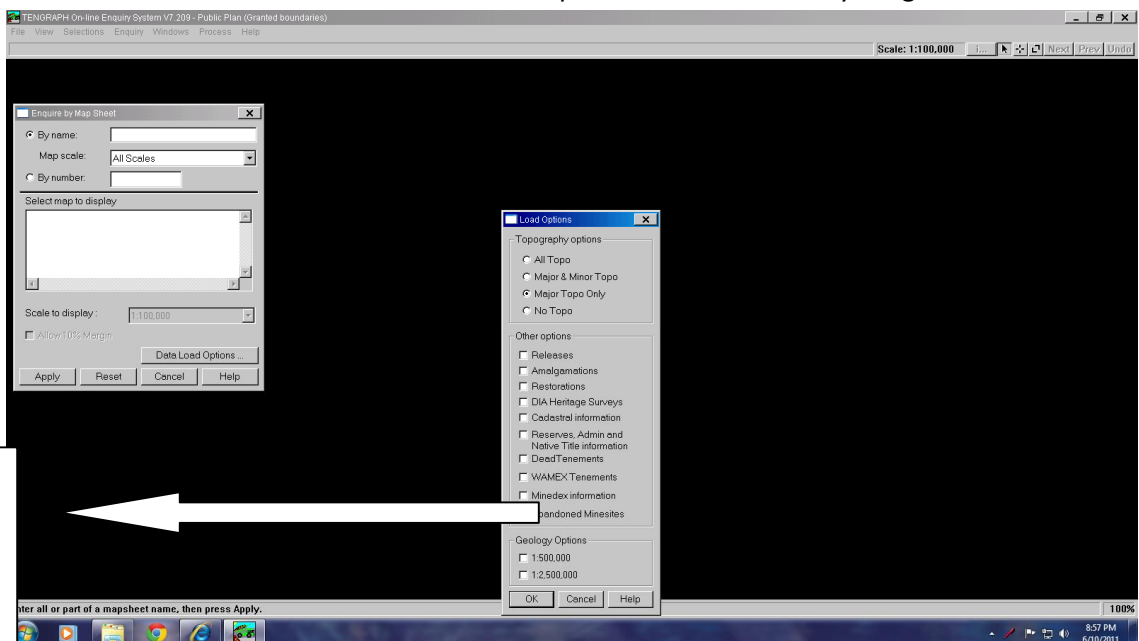
When it asks if you want to Install or Run Citrix, Choose: Install.

You need to register for Tengraph and input your personal data. On the set of options choose Minerals Titles and Tengraph. You will receive 3 emails. One of these will contain your user ID and your password.

Here is an option for first-time prospectors for how to find their way around Tengraph by relating the area on Tengraph to the matching area covered by the Topographical or Geological maps that cover all of Australia.

- When using Tengraph online it is quite practical to find your way around by looking for available tenements using your standard 1:250 000 Topographical Maps.
- Enter Tengraph through “Access Tengraph Online”.
- Input your User ID and Password and then on the next screen click on the Dump Truck on Left hand side.
- You should get a black screen
- On the Right Hand Side top menu, choose ENQUIRY

From the drop-down bar choose MAP SHEET. From the LOAD OPTIONS menu choose MAJOR TOPO ONLY and in the section titled OTHER Options “un-check” everything and Press “OK”.

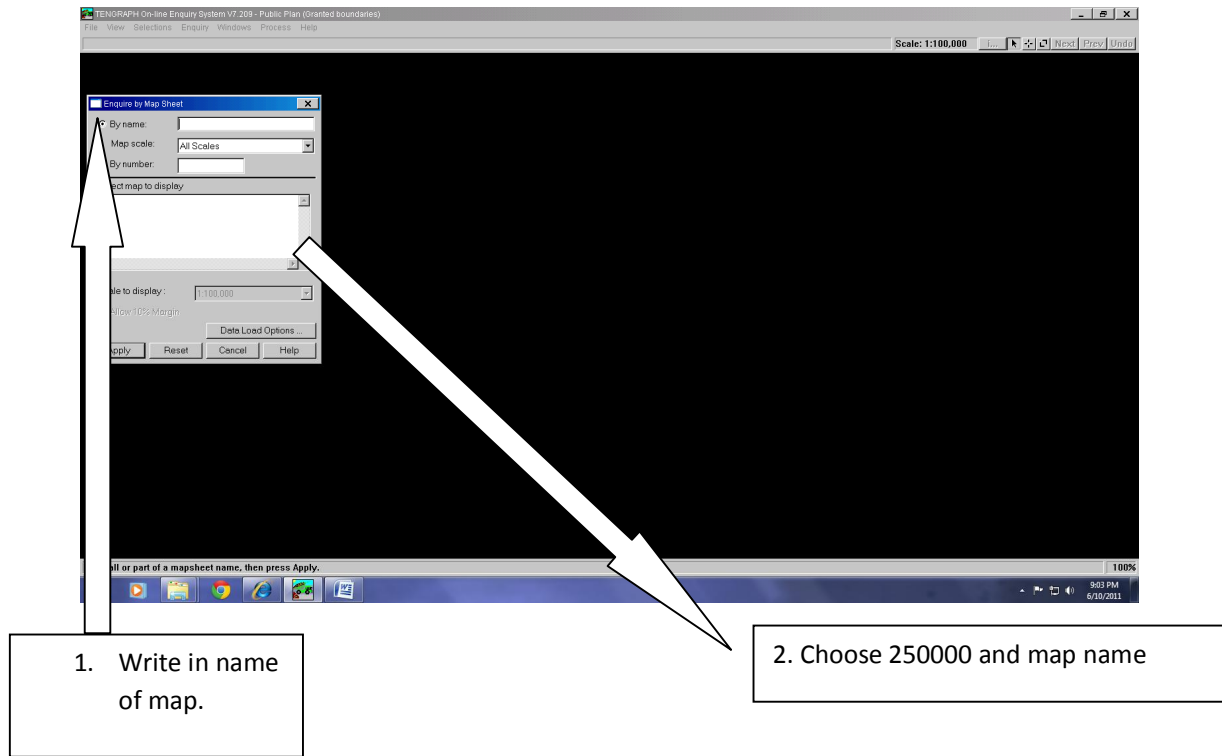


Choose Major Topo Only and Uncheck all other boxes.

On the ENQUIRE BY MAP SHEET BOX that is still on screen, write in box called BY NAME. Write

Sandstone, Belele etc). (An index sheet of the names of all of the topographical maps covering Australia is available for free from your local prospecting store.)

- Then click APPLY
- In the SELECT MAP TO DISPLAY choose 250000 (name of map eg KALGOORLIE)



- Click YES
- YES again and APPLY

The map will load.

- To enlarge or reduce the screen: press ALT and at same time PAGE UP to enlarge, PAGE DOWN to reduce.
- To move around the screen press ALT key and hold down, while using the direction arrows to move around the screen.
- The black areas are available for detecting – unless they are designated as unavailable, e.g. reserves etc
- The blue areas are “Pending” leases that have been applied for and not yet granted. You can prospect on these
- The green areas are “Live” leases and cannot be prospected on unless you have been given permission by the lease holder.

To find out who is the lease holder of a tenement, click the cursor inside a green lease and the little “i” button on the top right hand side will become available. Click the “i” button and the screen will tell you some info about the lease. Click on “Holders” and information about the lease holder will appear.

There are many other options available for using Tengraph. There is a comprehensive Dept of Mines document on their website giving a lot more information.